



# GEOGRAPHY

COURSE GUIDE 2019



Geography is a subject which  
holds the key to our future.

MICHAEL PALIN



# GEOGRAPHY

Linear A Level  
Exam Board PEARSON

JOIN THE  
CONVERSATION:

@Carmel\_Geog



## OUR STUDENTS SAY...

*Geography at Carmel has been an eye opening experience for me.*

The knowledge I have gained over my two years in the department has given me a wider understanding of the world. I have learnt to take pride in my work and fulfil my potential to the best of my ability. I have become an independent learner due to the research based work I complete, which puts me in a good position to carry out university work in September.

The course has been a great way to meet new people due to the group projects we carry out which have made the class a comfortable learning environment. This year I was lucky enough to take part in the Geography Expedition to Iceland where I got to see volcanic landscapes and landforms that have further deepened my interest in the subject. As a whole the college has been a great experience for me, I have met lots of new people in a friendly environment and thoroughly enjoyed my learning.



**Chloe Mulcahy** St Edmund Arrowsmith (Whiston)  
Studying - Geography, History, English Language & Literature

### What will the course involve?

Geography is an established subject, which emphasises a balanced understanding of both physical and human environments.

Your study of the subject will be based on two key elements: A **'People-Environment'** approach to Geography and an **'Enquiry'** approach to learning.

**'People-Environment Geography'** is based on the examination of the questions, issues and problems arising from the interaction of people with their varied environments.

The **'Enquiry'** approach to learning rests on the understanding that effective learning occurs when students are actively engaged in enquiry into key environmental questions, issues and problems. All units that you will study encourage you to evaluate sustainable development options for the future and to consider the part that you might play as a citizen and the contribution which you can make to a more sustainable use of the environment.

The world we live in is changing. Geography allows you to see why and how it is changing. It combines and enhances communication, literacy and numeracy, teamwork, analytical skills, plus cultural agility, spatial and environmental awareness.

### Within Geography, you will study the following:

#### Dynamic Landscapes:

- **Tectonic Processes and Hazards:** you will study earthquakes, volcanic eruptions and secondary hazards such as tsunamis.
- **Landscape Systems, Processes and Change:** you will investigate **glaciated** or **coastal landscapes** and the changes they experience through both physical processes and human activity.

#### Dynamic Places:

- **Globalisation:** you will study globalisation and global interdependence as it continues to accelerate, resulting in changing opportunities for businesses and people.
- **Shaping Places:** you will investigate places that are **regenerating** or are **diverse** in structure, specifically looking at how such places vary both demographically and culturally with change driven by local, national and global processes.

#### Physical Systems and Sustainability:

Within this area of study, you will develop a detailed knowledge of the following key physical systems and an understanding of the challenges we face in managing their sustainability for future generations:

- **The Water Cycle and Water Insecurity:** Water plays a key role in supporting life on Earth.
- **The Carbon Cycle and Energy Security:** A balanced carbon cycle is important in maintaining planetary health.
- **Climate Change Futures:** Climate and climate change provide a context for developing an understanding of the links between the water and carbon cycles and the role of feedbacks within and between the two cycles.

**“Geographer’s are sought after for almost any profession.”**

The Telegraph

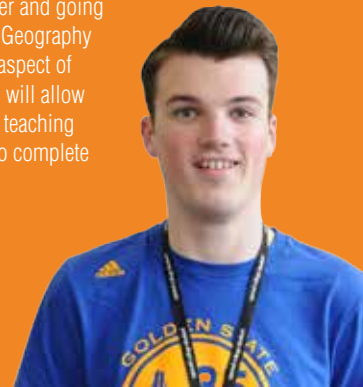


## OUR STUDENTS SAY...

*I enjoy the freedom and independence that studying at Carmel enables you to have. I enjoy studying Geography as it gives you an awareness of wider issues that affect the world, both physical and human.*

I would recommend it as all the information learnt is relevant and can be accessed easily. I have taken part in fieldwork in the Morecambe Bay area that allowed me to develop skills that will be useful in further fieldwork I will take part in at university. I have also visited Iceland which provided me with a unique experience and allowed me to partake in activities that I probably would not do again, such as scaling a glacier and going behind a waterfall. When I leave Carmel, I will be studying Geography at the University of Sheffield which focuses on the human aspect of the subject. I will also be studying abroad for a year, which will allow me to experience different cultures and a different styles of teaching whilst developing skills that will benefit me when I return to complete the final year of my degree.

**Stian Smith** Rainford High  
Studying - Geography, English Language, Law



### How successful are Carmel's Geography students?

The emphasis on hard work, active learning and enjoyment is reflected in the achievements of our students:

2016		
A*-B	A*-C	A*-E
44%	78%	96%

2017		
A*-B	A*-C	A*-E
44%	74%	93%

2018		
A*-B	A*-C	A*-E
36%	80%	100%

### Human Systems and Geopolitics:

- **Superpowers:** you will investigate how Superpowers can develop through a number of characteristics and how their pattern of dominance has changed over time.
- **Global Development and Connections:** you will study either - **Health, Human Rights and Intervention** where traditional definitions of development are based largely on economic measures but have been increasingly challenged with both human health and human rights being seen as significant measures of the progress within a society; or **Migration, Identity and Sovereignty**, recognising that Globalisation involves movements of capital, goods and people, resulting in unequal power relations which have tended to lead to unequal social and economic outcomes in the world.

### Coursework: Independent Investigation

A Level Geography students undertake a **minimum of four days of fieldwork** and in this coursework component you are required to undertake an **Independent Investigation** that involves fieldwork, producing a written academic report of **3000 to 4000 words**.

Fieldwork will be carried out in relation to the physical and human geography studied. You will be expected to show evidence that you have used both quantitative and qualitative data to support your Independent Investigation as appropriate to the particular environment and/or location.

### How will I be assessed?

The A Level Geography course consists of three externally examined papers and one coursework component, which will all be assessed in May/June of the second year of study. The course leads to a varied assessment and examination package, designed to recognise your achievement and progress. Throughout the course you will be assessed on a regular basis to enable both you and your Tutors to measure your progress and set targets for improvement. Your fieldwork and research skills will be assessed across the areas of study.

### What is the department like?

You will be joining an established and well-organised department which will provide you with a wide range of resources and facilities to support your studies. The two dedicated Geography classrooms contain excellent resources ranging from textbooks, periodicals and journals to networked computers,

laptops and tablets. Both classrooms are equipped with interactive white boards and multi-media projectors. Larger ICT suites are available close to the department but our most effective resources are the stimulating learning environments the department provides and the established field sites you will visit both at home and abroad.

### What will this course prepare me for?

As an A Level Geography student, you will have access to a wide range of possible career and Higher Education opportunities. Many students, on completing A Level Geography, progress onto Higher Education courses in Geography or Environmental Science. In 2016, 90% of A Level Geography students progressed from Carmel to University, with 50% reading Geography or a Geography related subject. Increasing numbers of students are now studying degrees in Sustainable Development, Geographical Information Systems and Environmental Management.

You will be able to build on your Geography, and as many former students have done, move into specialist careers in development, ecosystems and environmental management, land and water processes, cartography and computing, population, settlement and industry as well as tourism and recreation. The list is endless!

**“More than ever we need the Geographer's skills and foresight to help us learn about our planet - how we use it and how we abuse it.”**

Michael Palin



Fieldwork at Sandscale Haws



Geography students visiting Bessastaor, Iceland

## Meet the Tutors

Kieron Vesey  
Head of Geography

Mike Graham  
Geography Subject Tutor / Humanities  
High Achievers' Co-ordinator

## Frequently Asked Questions

**What are the entry requirements for this course?**

A **grade 5 in GCSE Geography** (if studied) and a **grade 5 in English Language and Mathematics**.

**What type of Geography will I study?**

You will study 'People-Environment' Geography which looks at the interactions between people and their varied environments, and the questions, issues and problems which arise from these interactions. It is an environmental approach, which contains a balance between the physical and human environments.

**What support will I receive?**

The department takes pride in the level of support we can give you and a wide range of support will be available to you on the Geography course. A booking system is available for you to arrange individual tutorials on specific topics related to your studies. Group tutorials are also arranged to provide revision support prior to your exams and 'drop-in' tutorials are set up during the completion of assignments for example. So there is no need to lose sleep at night, all you have to do is drop into the department; your teachers will always be available to offer help and support. In addition to academic and pastoral support, you will also have access to a wide range of resources and seminars related to careers in Geography throughout your course.

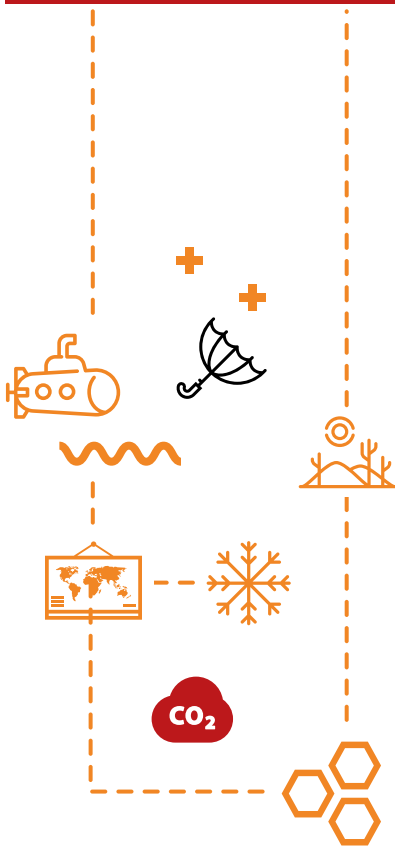
**What other activities will I get involved in?**

Enriching your studies will be an important part of your time with the department. Our strong links with The University of Liverpool, Manchester Metropolitan University and Hope University will give you the opportunity to attend lectures and conferences at these universities as well as presentations by guest speakers visiting Carmel's Geography Department.

An integral part of the course will be a memorable 3/4 day residential based at The Castle Head Field Centre, which provides a base for field investigations on the Lancashire coast, Cumbria and North Yorkshire. In conjunction with the Field Studies Council, you will conduct field investigations on coastal defences, beach sediment, sand dune systems, urban and rural regeneration, enabling you to develop a wide range of geographical skills in the field.

In the second year, students have also had the opportunity to take the Coyote Trail across the south-western states of America, visiting the Grand Canyon and Bryce Canyon National Parks as well as Lake Powell, Monument Valley and Los Angeles. In 2017, students spent six incredible days in Iceland. They visited Reykjavik and the surrounding landscape and landforms of this volcanically active zone; volcanoes, geysirs, glaciers and the Mid-Atlantic Ridge – a lifetime experience!

You will also get the opportunity to take part in national competitions such as 'Earthwatch' and 'Latitude' which can give you the opportunity to be a part of international conservation expeditions.



**carmel**  
college

Prescot Road, St Helens  
Merseyside WA10 3AG  
[www.carmel.ac.uk](http://www.carmel.ac.uk)

## More Information

Exam board: <https://qualifications.pearson.com/en/subjects/geography.html>  
The Royal Geographical Society: [www.rgs.org](http://www.rgs.org)  
Calculate your Ecological Footprint: <http://ecofoot.org/>